

## Concerto à 4 Violini No. 1

## Violino 4

Georg Philipp Telemann (1681–1767)

TWV 40:201

Largo

9

16

21

28

35

2

*tr*



## Vivace

Musical score for Violino 4, page 3, starting with "Vivace". The score is written in treble clef, key of D major (one sharp), and 3/8 time. The tempo is marked "Vivace". The score consists of 11 staves of music, with measure numbers 9, 19, 31, 40, 50, 60, 70, 80, 90, 100, and 110 indicated at the beginning of each staff. The music features various rhythmic patterns, including eighth and sixteenth notes, and rests. Dynamic markings include *p* (piano) and *f* (forte). Fingerings are indicated by numbers 1-4 above notes. The score ends with a double bar line at measure 110.

# Concerto à 4 Violini No. 2

Georg Philipp Telemann (1681–1767)  
TWV 40:202

## Violino 4

**Adagio**

Musical notation for the Adagio section, measures 1-5. The key signature is one sharp (F#) and the time signature is common time (C). The melody consists of quarter notes with eighth rests.

**Allegro**

Musical notation for the Allegro section, measures 6-8. The key signature is one sharp (F#) and the time signature is common time (C). The melody features a triplet of eighth notes.

6

Musical notation for the Allegro section, measures 9-12. The key signature is one sharp (F#) and the time signature is common time (C). The melody continues with eighth notes and triplet patterns.

9

Musical notation for the Allegro section, measures 13-16. The key signature is one sharp (F#) and the time signature is common time (C). The melody continues with eighth notes and triplet patterns.

13

Musical notation for the Allegro section, measures 17-20. The key signature is one sharp (F#) and the time signature is common time (C). The melody continues with eighth notes and triplet patterns.

17

Musical notation for the Allegro section, measures 21-24. The key signature is one sharp (F#) and the time signature is common time (C). The melody continues with eighth notes and triplet patterns.

21

Musical notation for the Allegro section, measures 25-28. The key signature is one sharp (F#) and the time signature is common time (C). The melody continues with eighth notes and triplet patterns.

25

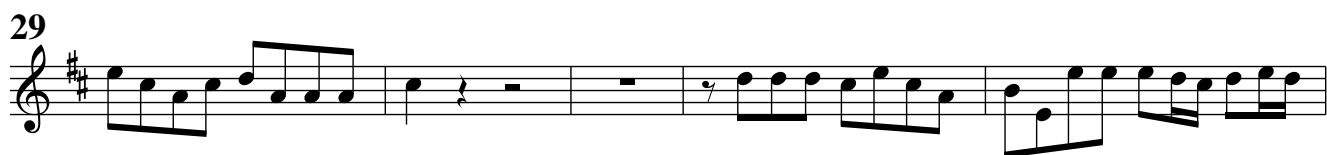
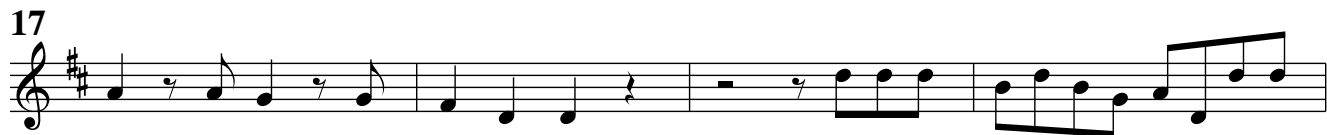
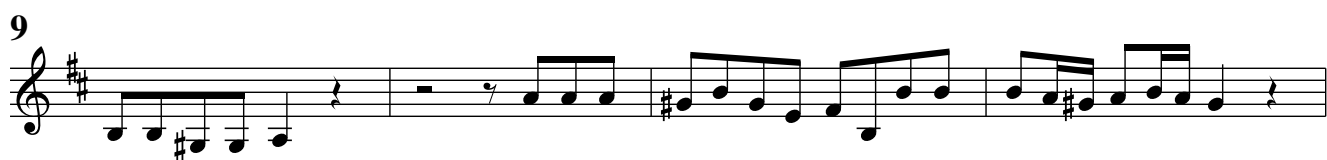
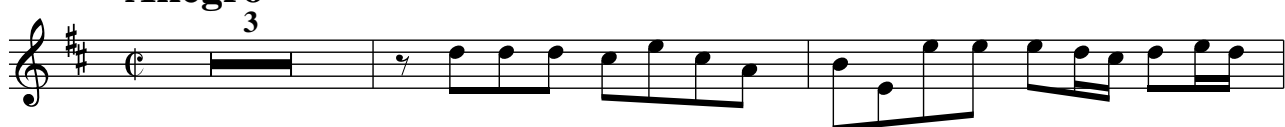
Musical notation for the Allegro section, measures 29-32. The key signature is one sharp (F#) and the time signature is common time (C). The melody continues with eighth notes and triplet patterns.

**Grave**

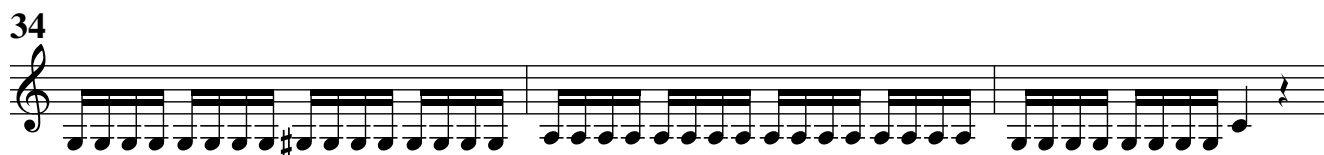
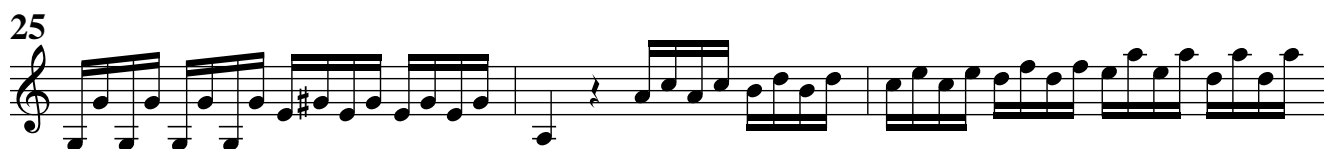
Musical notation for the Grave section, measures 33-37. The key signature is one sharp (F#) and the time signature is 3/2. The melody consists of half notes.

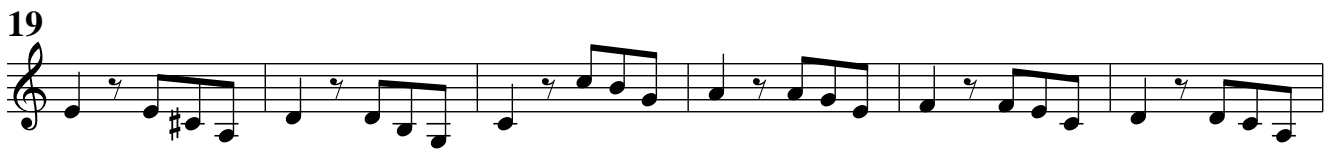
8

Musical notation for the Grave section, measures 38-42. The key signature is one sharp (F#) and the time signature is 3/2. The melody consists of half notes, ending with a fermata.

**Allegro**

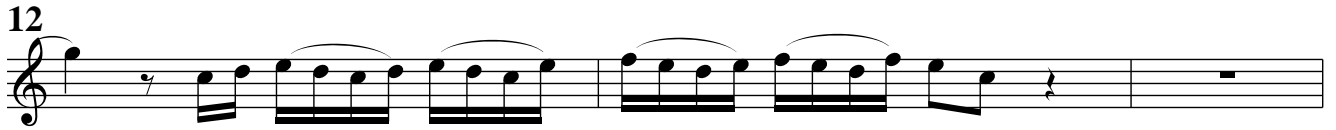




**Largo e staccato****Allegro**



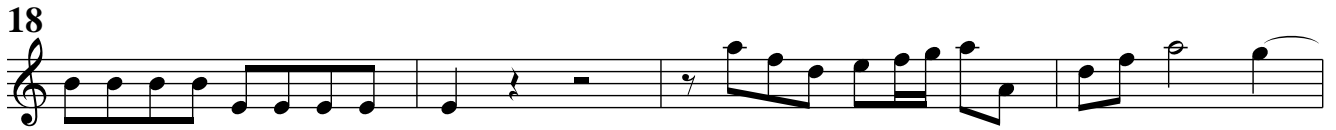
12



15



18



22



26



29



33



37



40



43



# Concerto à 4 Violini No. 4

Georg Philipp Telemann (1681–1767)

TWV 40:204

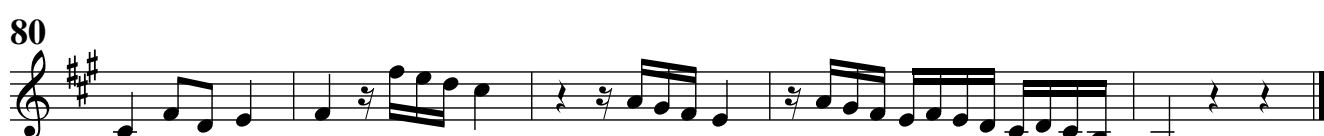
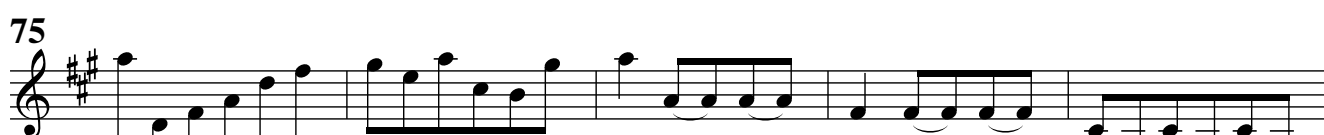
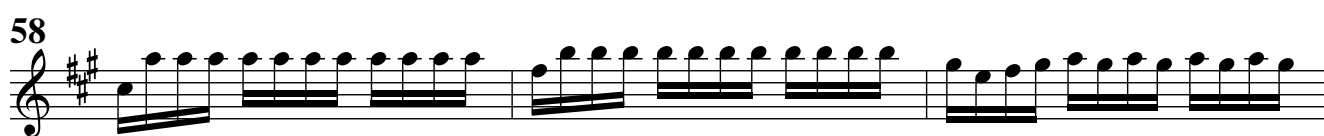
## Violino 4

### Grave

Musical score for Violino 4, Grave section. The score is written in treble clef with a key signature of two sharps (F# and C#) and a common time signature (C). The tempo is marked "Grave". The score consists of four staves of music. The first staff begins with a measure rest, followed by a series of chords and a fermata. The second staff continues with a series of chords. The third staff begins with a measure rest, followed by a series of chords and a fermata. The fourth staff continues with a series of chords and a fermata. The score is marked with a "2" above the first staff and a "2" above the third staff, indicating a second ending or a specific fingering.

### Allegro

Musical score for Violino 4, Allegro section. The score is written in treble clef with a key signature of two sharps (F# and C#) and a 3/4 time signature. The tempo is marked "Allegro". The score consists of four staves of music. The first staff begins with a series of eighth notes. The second staff continues with a series of eighth notes. The third staff begins with a measure rest, followed by a series of eighth notes and a fermata. The fourth staff continues with a series of eighth notes and a fermata. The score is marked with a "6" above the third staff, indicating a sixteenth note or a specific fingering.



**Adagio**

Musical score for the Adagio section, measures 1 through 7. The music is written in treble clef with a key signature of two sharps (F# and C#) and a common time signature (C). The tempo is marked Adagio. The notation consists of a single melodic line with eighth and sixteenth notes, some with slurs and ties.

**Spiritoso**

Musical score for the Spiritoso section, measures 1 through 19. The music is written in treble clef with a key signature of two sharps (F# and C#) and a common time signature (C). The tempo is marked Spiritoso. The notation features a variety of rhythmic patterns, including eighth and sixteenth notes, and rests. Dynamics are indicated by *f* (forte) and *p* (piano) markings. The section concludes with a double bar line at measure 19.

