

## Concerto à 4 Violini No. 1

## Violino 3

Georg Philipp Telemann (1681–1767)

TWV 40:201

Largo

The musical score for Violino 3 is written in G major (one sharp) and 3/4 time. The tempo is marked 'Largo'. The score consists of six staves of music, with measure numbers 9, 16, 23, 31, and 38 indicated at the beginning of their respective staves. The first staff begins with a whole rest, followed by a series of eighth notes. The second staff continues with eighth notes and a triplet of eighth notes. The third staff features a complex rhythmic pattern with many beamed eighth notes and a dotted quarter note. The fourth staff continues with eighth notes and a sharp sign indicating a key change to A major. The fifth staff has a series of eighth notes followed by a whole rest and a quarter rest. The sixth staff concludes with a triplet of eighth notes, a quarter note, and a half note with a trill (tr) above it.

**Allegro**

3

7

11

14

18

22

26

30

34

38

42

**Adagio**

## Vivace

9

20

31

40

50

60

70

80

90

100

110

*p*

*f*

2

3

# Concerto à 4 Violini No. 2

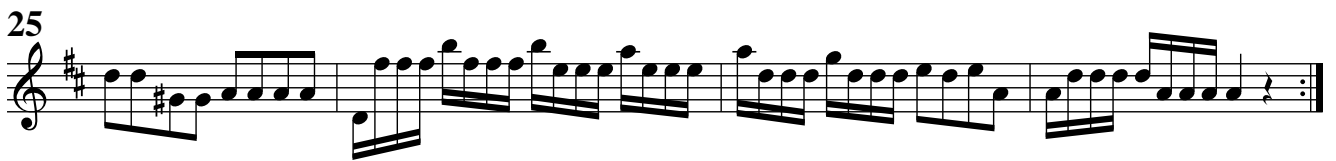
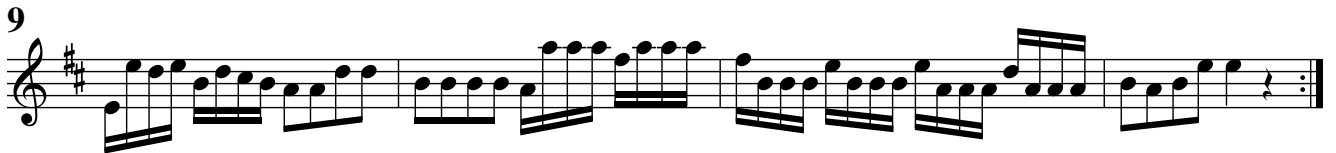
Georg Philipp Telemann (1681–1767)  
TWV 40:202

## Violino 3

**Adagio**



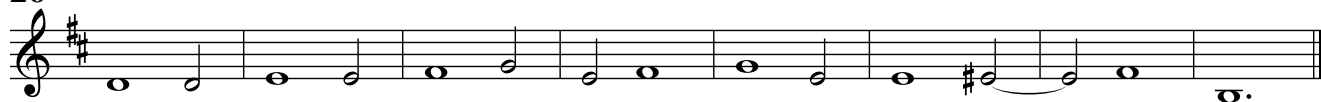
**Allegro**  
2



**Grave**



26

**Allegro**

6



9



13



17



21



25



29



34



39

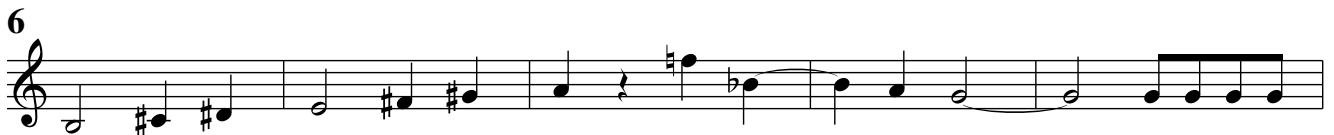
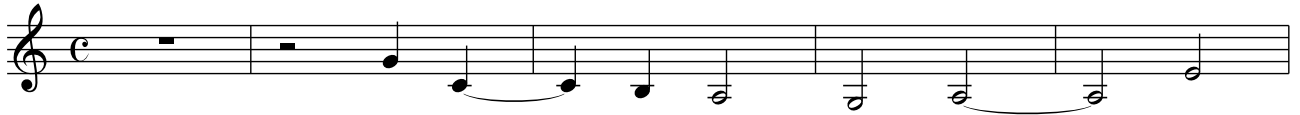


## Concerto à 4 Violini No. 3

## Violino 3

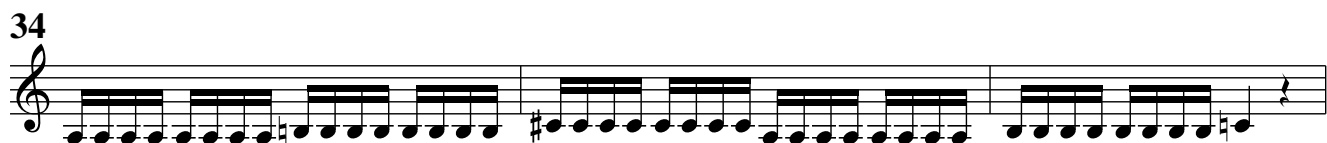
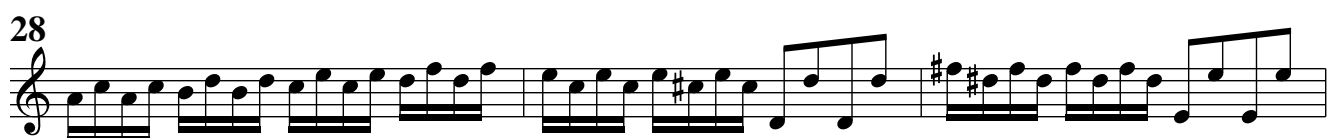
Georg Philipp Telemann (1681–1767)  
TWV 40:203

## Grave



## Allegro

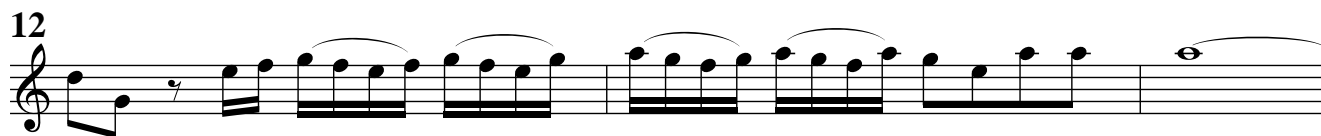




**Largo e staccato****Allegro**



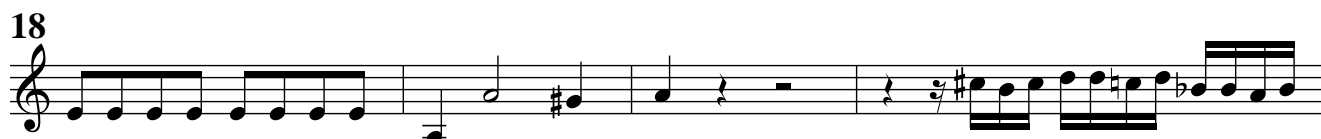
12



15



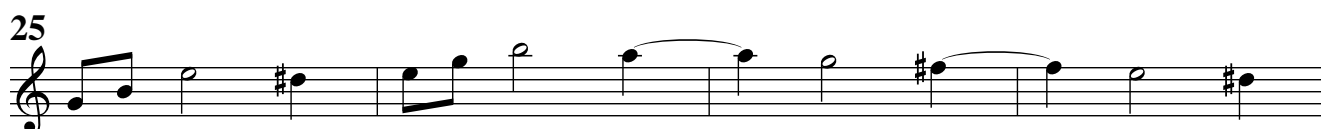
18



22



25



29



33



37



40



43



# Concerto à 4 Violini No. 4

Georg Philipp Telemann (1681–1767)

TWV 40:204

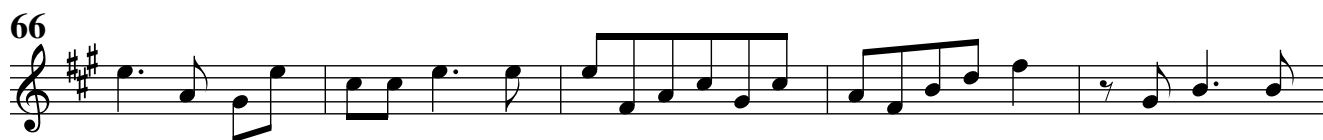
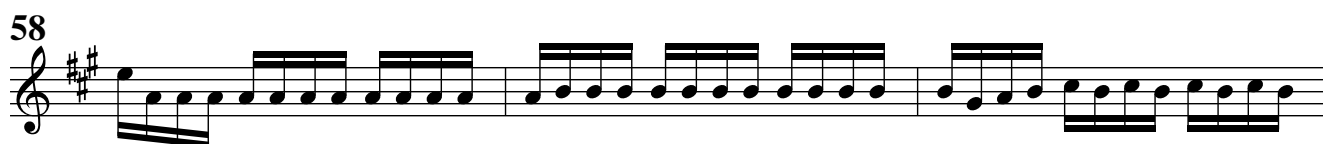
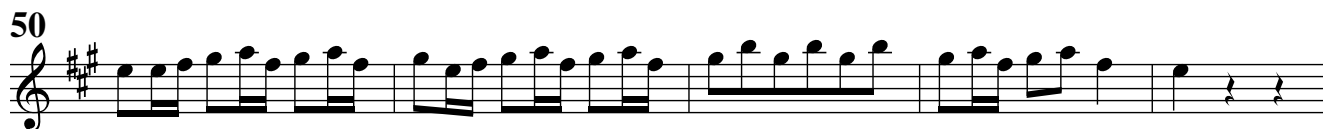
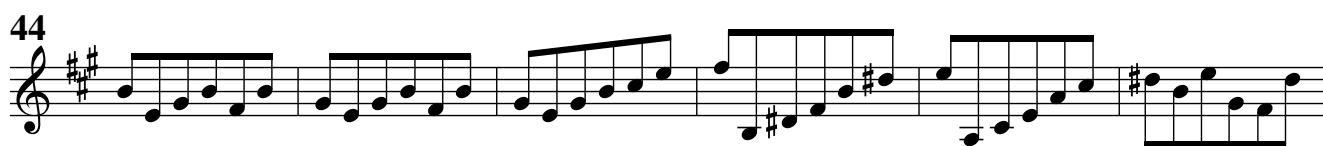
## Violino 3

### Grave

Musical score for Violino 3, Grave section. The score is written in treble clef with a key signature of two sharps (F# and C#) and a common time signature (C). The tempo is marked 'Grave'. The score consists of four staves of music, with measure numbers 8, 15, and 22 indicated at the beginning of the second, third, and fourth staves respectively. The music features a series of chords and intervals, primarily in the lower register, with some rests.

### Allegro

Musical score for Violino 3, Allegro section. The score is written in treble clef with a key signature of two sharps (F# and C#) and a 3/4 time signature. The tempo is marked 'Allegro'. The score consists of four staves of music, with measure numbers 14, 19, 25, and 32 indicated at the beginning of the first, second, third, and fourth staves respectively. The music features a series of eighth and sixteenth notes, with some rests and a final double bar line at the end of the fourth staff.



**Adagio**

Musical score for the Adagio section, measures 1 through 7. The music is in treble clef, key of A major (two sharps), and common time (C). The tempo is Adagio. The notation consists of a single melodic line with various rhythmic values including eighth and sixteenth notes, and rests.

**Spirituoso**

Musical score for the Spiruoso section, measures 1 through 19. The music is in treble clef, key of A major (two sharps), and common time (C). The tempo is Spiruoso. The notation features a complex rhythmic pattern with frequent sixteenth-note runs and rests. Dynamic markings include *f* (forte) and *p* (piano) throughout the section.

Musical score for Violino 3, page 13, measures 22-49. The score is written in treble clef with a key signature of two sharps (F# and C#). The tempo is marked with a '3' over the first measure of each system, indicating a 3/4 time signature. The dynamics are marked with *f* (forte) and *p* (piano).

Measures 22-24: *p*

Measures 25-27: *f*, *p*, *f*, *p*

Measures 28-30: *f*, *p*

Measures 31-33: *p*, *f*, *f*

Measures 34-36: *f*

Measures 37-39: *f*

Measures 40-42: *f*

Measures 43-45: *p*, *f*, *p*, *f*

Measures 46-48: *f*

Measure 49: *f*