



# GYMNOPEDIE

Erik Satie  
1<sup>re</sup> Gymnopédie

*Andante*







Nov. 1888

Handwritten musical notation for the first system, consisting of a treble staff and a bass staff. The treble staff contains a melodic line with notes, rests, and slurs. The bass staff contains a bass line with notes and rests. The notation is in black ink on aged paper.

Handwritten musical notation for the second system, consisting of a treble staff and a bass staff. The treble staff contains a melodic line with notes, rests, and slurs. The bass staff contains a bass line with notes and rests. The notation is in black ink on aged paper.

Handwritten musical notation for the third system, consisting of a treble staff and a bass staff. The treble staff contains a melodic line with notes, rests, and slurs. The bass staff contains a bass line with notes and rests. The notation is in black ink on aged paper.

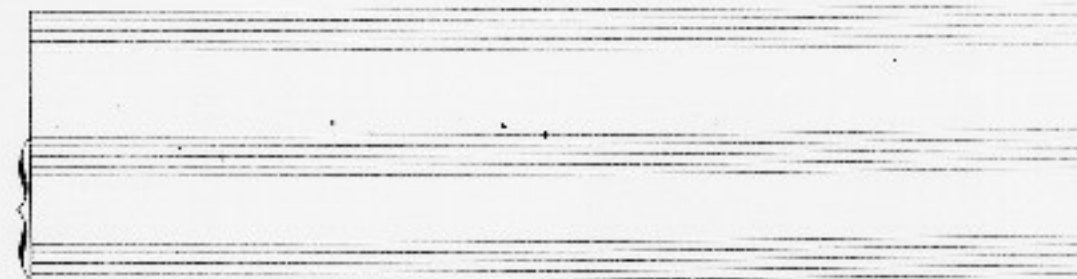
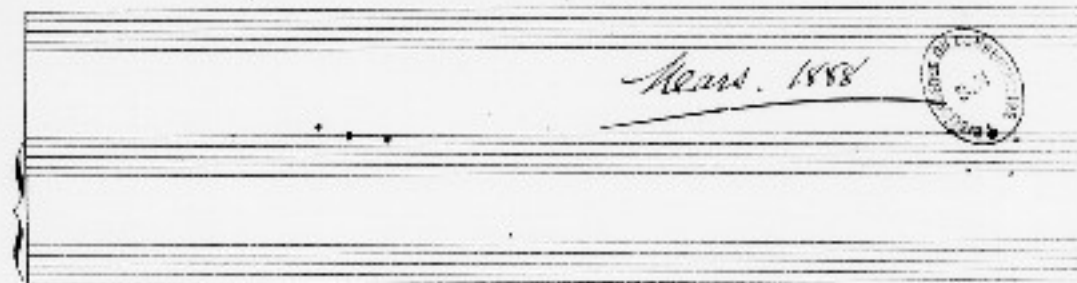
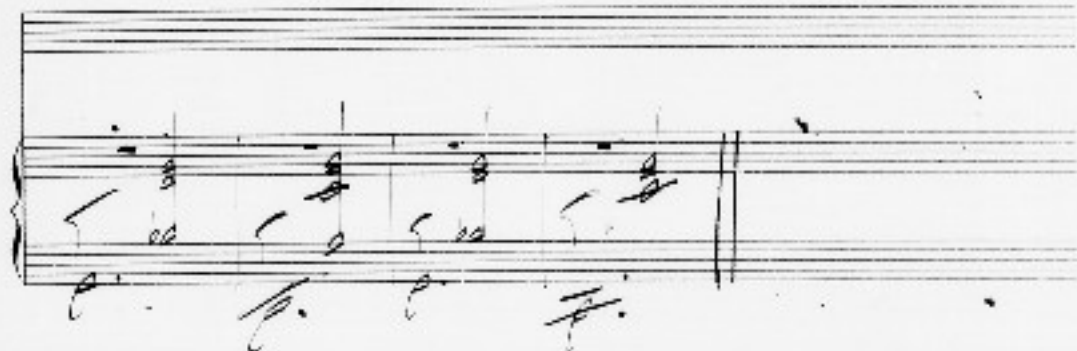
Handwritten musical notation for the fourth system, consisting of a treble staff and a bass staff. The treble staff contains a melodic line with notes, rests, and slurs. The bass staff contains a bass line with notes and rests. The notation is in black ink on aged paper.

Handwritten musical notation for the first system. The system consists of two staves. The upper staff is a treble clef staff containing a melodic line with quarter notes, eighth notes, and a half note, including some slurs. The lower staff is a bass clef staff containing a bass line with quarter notes and rests. The notation is in black ink on aged paper.

Handwritten musical notation for the second system. The system consists of two staves. The upper staff is a treble clef staff containing a melodic line with quarter notes, eighth notes, and a half note, including some slurs. The lower staff is a bass clef staff containing a bass line with quarter notes and rests. The notation is in black ink on aged paper.

Handwritten musical notation for the third system. The system consists of two staves. The upper staff is a treble clef staff containing a melodic line with quarter notes, eighth notes, and a half note, including some slurs. The lower staff is a bass clef staff containing a bass line with quarter notes and rests. The notation is in black ink on aged paper.

Handwritten musical notation for the fourth system. The system consists of two staves. The upper staff is a treble clef staff containing a melodic line with quarter notes, eighth notes, and a half note, including some slurs. The lower staff is a bass clef staff containing a bass line with quarter notes and rests. The notation is in black ink on aged paper.



Handwritten musical notation on a grand staff with a treble clef. The music features a melodic line in the upper voice and a bass line in the lower voice. A dynamic marking 'pp' is present. A large slur covers the entire system.

Handwritten musical notation on a grand staff with a treble clef. The music continues with a melodic line and a bass line. A large slur covers the entire system.

Handwritten musical notation on a grand staff with a treble clef. The music continues with a melodic line and a bass line. A large slur covers the entire system.

Handwritten musical notation on a grand staff with a treble clef. The music continues with a melodic line and a bass line. A large slur covers the entire system.





Handwritten musical notation on a grand staff. The top staff has a treble clef and the bottom staff has a bass clef. The notation includes various notes, rests, and dynamic markings such as *pp* and *p*.

Handwritten musical notation on a grand staff, continuing the piece from the first system. It features similar notation with notes and rests.

Handwritten musical notation on a grand staff, mostly obscured by a large signature and a circular stamp. The signature appears to be "R. ...". The stamp contains the text "MUSIC COMPANY".

