

Basse (Violoncello/ Violone)

Concert pour quatre parties de violes

Marc-Antoine Charpentier (1634 – 1704)

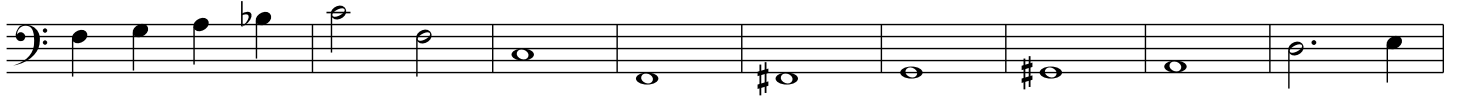
H. 545

Prélude 1

10



19



28

**Prélude 2**

6



12

**Sarabande**

11



21



31



Gigue anglaise

Musical score for Gigue anglaise, bass clef, 3/4 time signature. The score consists of four staves of music. The first staff starts with a treble clef and a key signature of one flat (B-flat). The second staff has a measure rest at the beginning. The third staff has a measure rest at the beginning. The fourth staff has a measure rest at the beginning. The score includes first and second endings for the second staff.

Gigue française

Musical score for Gigue française, bass clef, common time signature. The score consists of four staves of music. The first staff starts with a treble clef and a key signature of one flat (B-flat). The second staff has a measure rest at the beginning. The third staff has a measure rest at the beginning. The fourth staff has a measure rest at the beginning. The score includes first and second endings for the second staff.

Passecaïlle



8



17



25



34



42



50



58



66

