
Tomaso
Albinoni

6 Sinfonie a cinque
op. 2

Basso

© 2007

CreativeCommons–Attribution–ShareAlike–3.0

Sonata I a 5

Tomaso Albinoni
op. 2 Nr. 1

Basso

Grave e adagio

3

f

10

Allegro

9

f

16

23

30

37

43

50

57

tr

Adagio

9 *p*

18

27

Allegro

7 *f*

13

20

27 *p* *f*

34 *p* *f* *p*

42 *f*

49

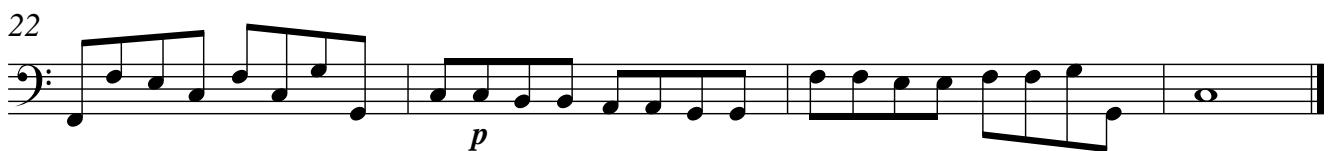
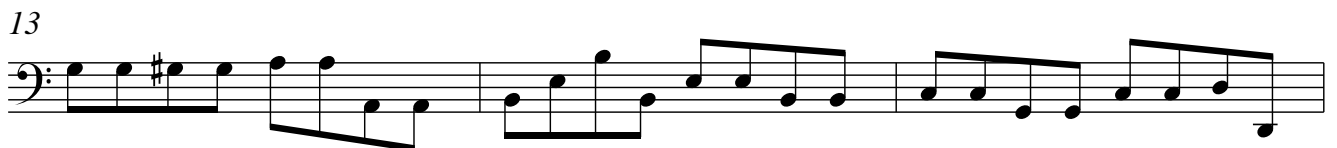
55 *p*

Sonata II a 5

Tomaso Albinoni
op. 2 Nr. 3

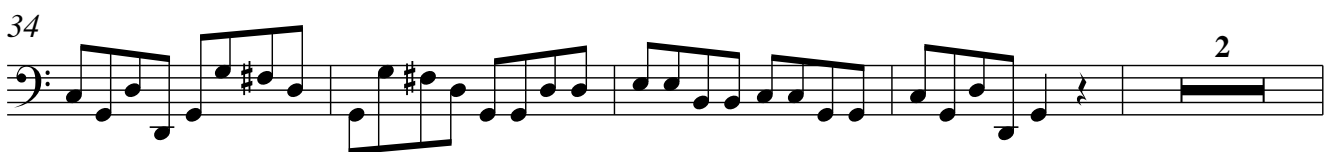
Basso

Largo



Allegro

5



40



43



47



51

**Grave**

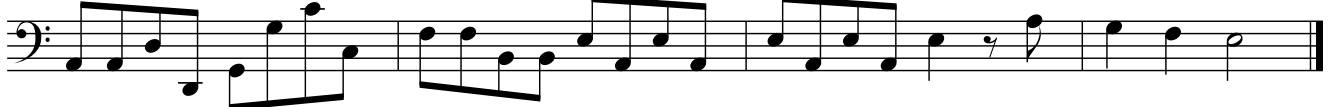
5



9



13



Allegro

25 *f*

32

41 6

57

68

77

86

95

104

113

122 *p*

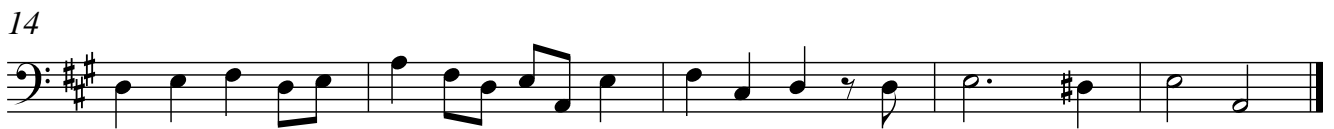
Detailed description: This is a page of musical notation for the Bassoon part of Albinoni's Sonata II a 5 op. 2 Nr. 3. The music is in 3/8 time and begins with a forte (f) dynamic. The score consists of ten staves of music, with measure numbers 25, 32, 41, 57, 68, 77, 86, 95, 104, 113, and 122 marked at the start of their respective staves. A first ending bracket labeled '6' spans measures 41 to 46. The piece concludes with a piano (p) dynamic at measure 122.

Sonata III a 5

Tomaso Albinoni
op. 2 Nr. 5

Basso

Grave



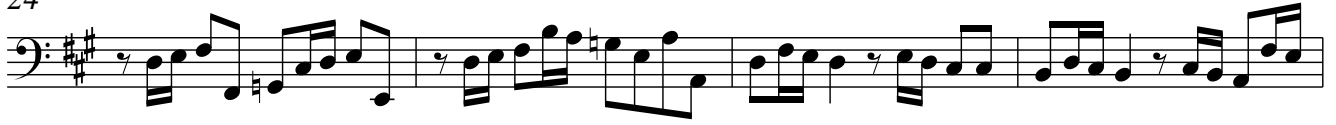
Allegro



20



24



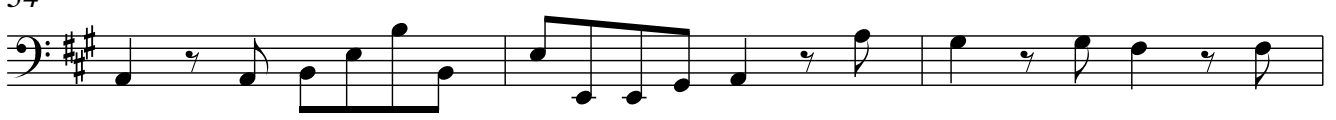
28



31



34



37



41



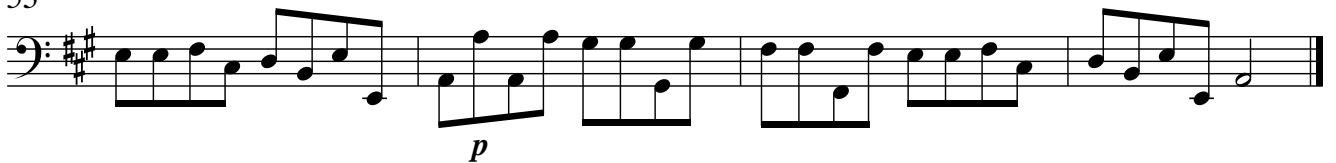
45



49



53



37



43



49



55



61



67



72



77



82



87



93



Sonata IV a 5

Basso

Tomaso Albinoni
op. 2 Nr. 7

Grave



19



25



31



37



43



49



55



60

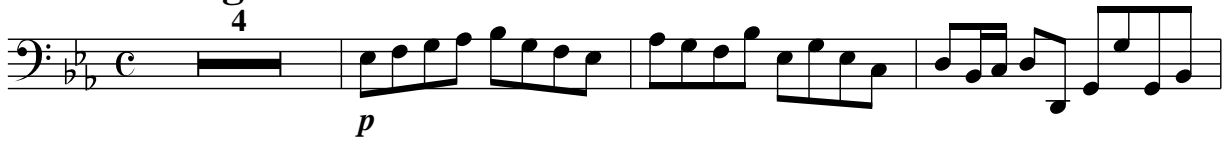


65



Adagio

4



8



11

**Allegro**

14



22



32



42



52



62



70



79



87



96



105



114



123



Sonata V a 5

Tomaso Albinoni
op. 2 Nr. 9

Violoncello/ Basso

Largo

4

8

12

16

20

Allegro assai

7

13

19

24

29



35



41



46



52



57



63



68



73

**Grave**

p

5



9



Allegro

13

f

tr

21

29

37

45

f

tr

54

63

72

81

tr

90

98

106

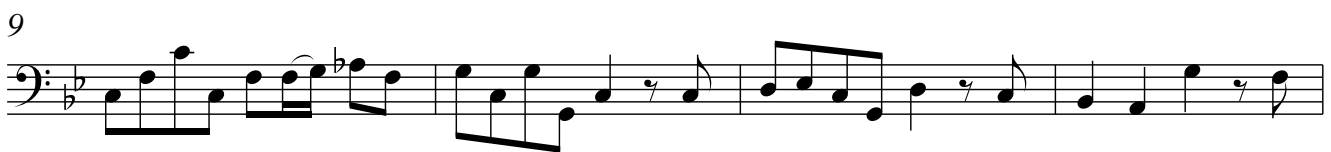
Detailed description: This is a page of musical notation for a cello or bass part. It features ten staves of music in 3/4 time, with a key signature of one flat (B-flat). The tempo is marked 'Allegro'. The score begins at measure 13. The first staff contains a whole rest followed by a series of eighth notes, marked with a forte (*f*) dynamic and a trill (*tr*) over a dotted quarter note. Subsequent staves show various rhythmic patterns, including eighth-note runs, quarter notes, and half notes. Trills (*tr*) are used as ornaments over several notes. The piece concludes at measure 110 with a final whole note and a double bar line.

Sonata VI a 5

Basso

Tomaso Albinoni
op. 2 Nr. 11

Adagio

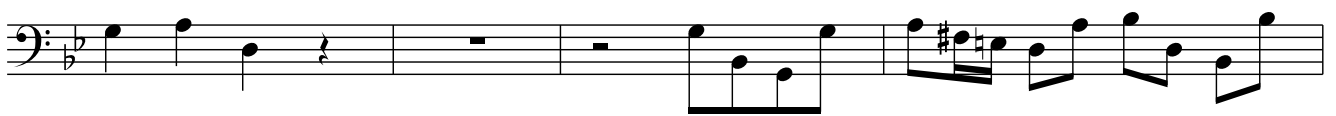


Allegro

5



9



13



17



21



25



29



33



37



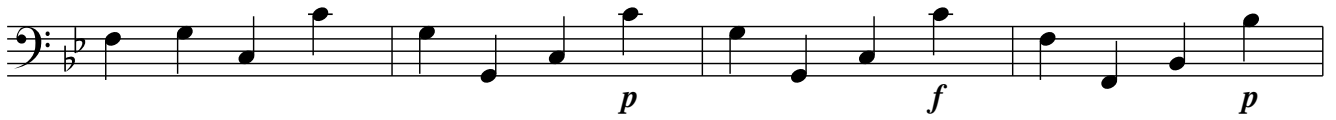
41



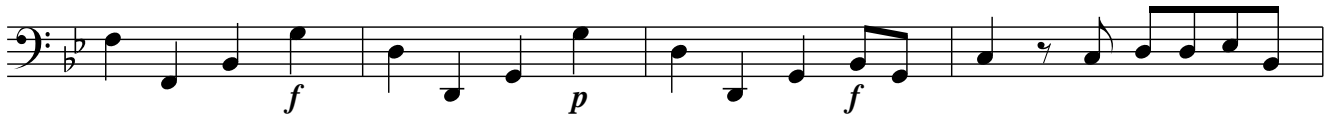
45



49



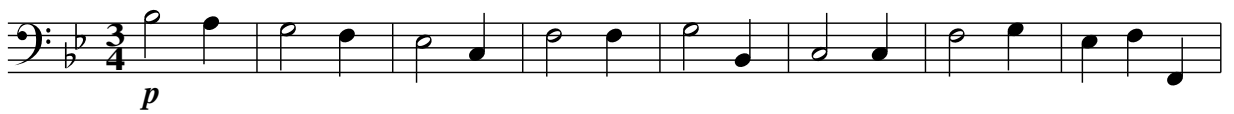
53



57



61

**Grave**

9



17



25



Allegro

5

9

13

17

21

24

28

32

36

40

43

46

50

f

tr

p