
Tomaso
Albinoni

6 Sinfonie a cinque
op. 2

Violoncello

© 2007

CreativeCommons–Attribution–ShareAlike–3.0

Sonata I a 5

Tomaso Albinoni
op. 2 Nr. 1

Violoncello

Grave e adagio

3

f

10

Allegro

9

f

16

23

30

37

43

50

57

tr

Adagio

Musical score for the Adagio section, starting at measure 9. The music is in G major and 3/2 time. It features a slow, melodic line with a dynamic marking of *p* (piano) at the beginning. The score consists of four staves of music, ending with a double bar line at measure 30.

Allegro

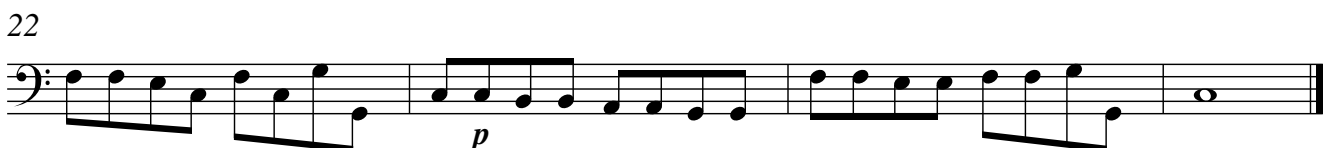
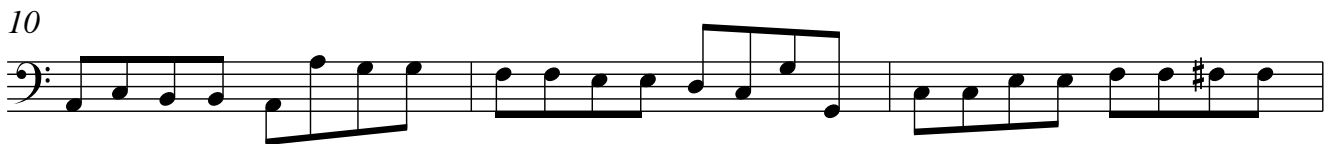
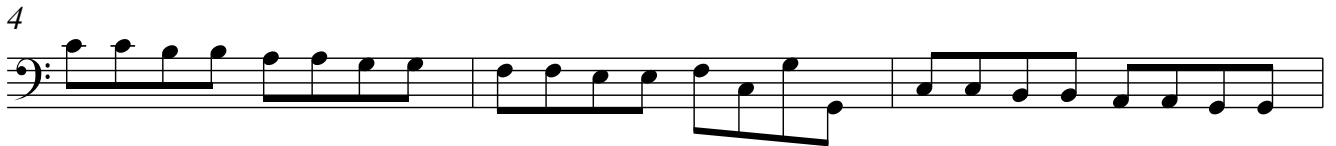
Musical score for the Allegro section, starting at measure 7. The music is in G major and 6/8 time. It features a more rhythmic and energetic line with a dynamic marking of *f* (forte) at the beginning. The score consists of ten staves of music, ending with a double bar line at measure 60. Dynamic markings of *p* and *f* are used throughout the section.

Sonata II a 5

Violoncello

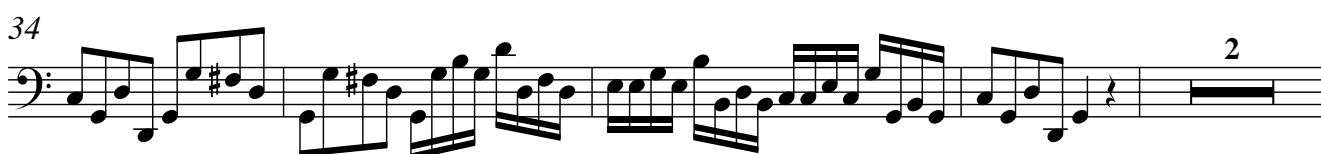
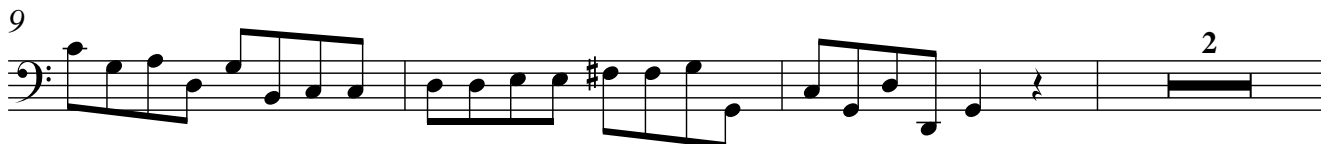
Tomaso Albinoni
op. 2 Nr. 3

Largo



Allegro

5



40



44



47



51

**Grave**

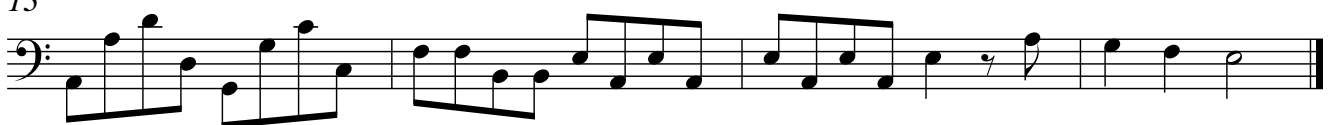
5



9



13



Allegro

25

f

31

41

6

57

68

77

86

95

104

113

122

p

Detailed description: This is a page of a musical score for the cello part of a sonata. The music is in 3/8 time and begins with a tempo marking of 'Allegro'. The score consists of ten staves of music, each starting with a measure number. The first staff starts at measure 25 and includes a dynamic marking of 'f'. The second staff starts at measure 31. The third staff starts at measure 41 and includes a fingering '6'. The fourth staff starts at measure 57. The fifth staff starts at measure 68. The sixth staff starts at measure 77. The seventh staff starts at measure 86. The eighth staff starts at measure 95. The ninth staff starts at measure 104. The tenth staff starts at measure 113 and ends at measure 122 with a dynamic marking of 'p'. The music features a variety of rhythmic patterns, including eighth and sixteenth notes, and rests.

Sonata III a 5

Tomaso Albinoni
op. 2 Nr. 5

Violoncello

Grave



20



24



28



31



34



37



41



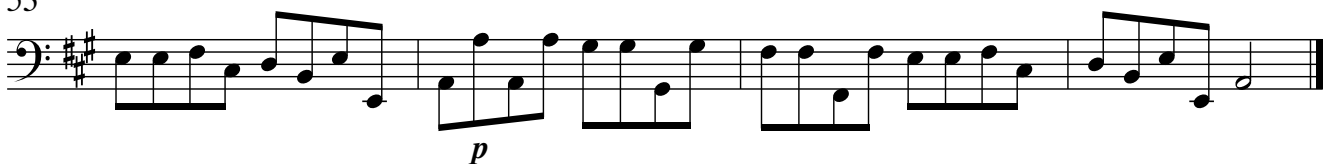
45



49



53



37



43



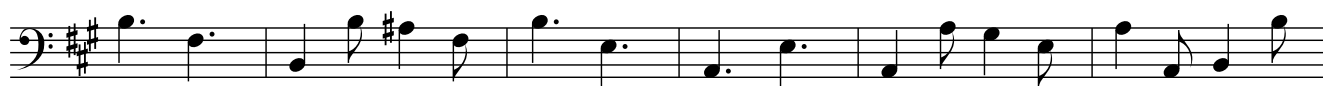
49



55



61



67



72



77



82



87



93



Sonata IV a 5

Violoncello

Tomaso Albinoni
op. 2 Nr. 7

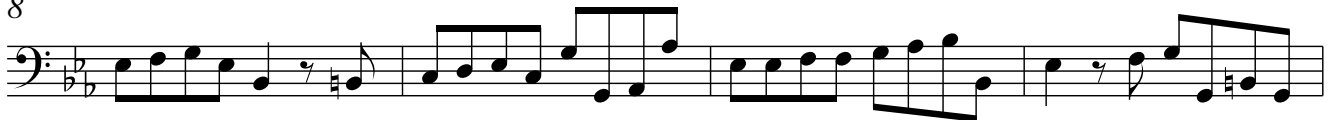
Grave



4



8



12



16



Allegro



13



19



25



31



37



43



49



55

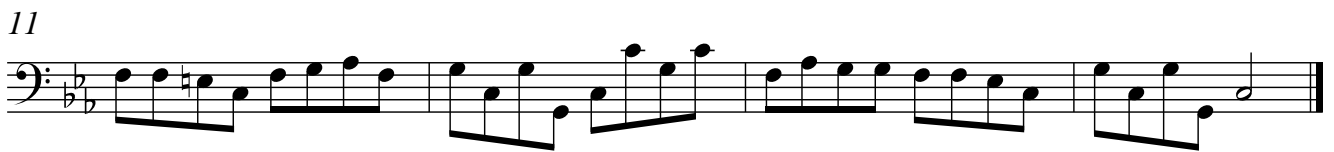
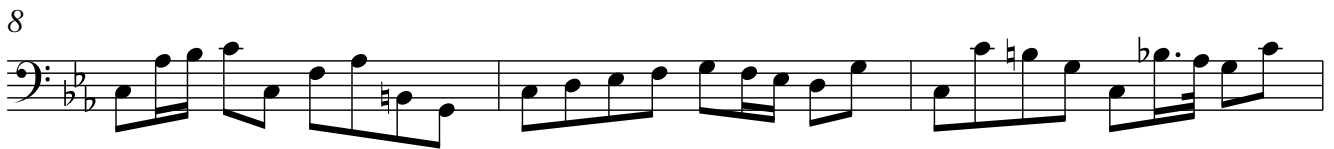


60



65



Adagio**Allegro**

52



62



70



79



87



96



105



114



123



Sonata V a 5

Tomaso Albinoni
op. 2 Nr. 9

Violoncello/ Basso

Largo

Musical score for Violoncello/Basso, Largo movement, measures 1-20. The score is written in bass clef, 6/8 time, and B-flat major. It begins with a forte (*f*) dynamic. The melody consists of eighth and sixteenth notes, with some rests. Measure numbers 4, 8, 12, 16, and 20 are indicated at the start of their respective staves.

Allegro assai

Musical score for Violoncello/Basso, Allegro assai movement, measures 7-24. The score is written in bass clef, 6/8 time, and B-flat major. It begins with a forte (*f*) dynamic. The melody is more rhythmic, featuring eighth and sixteenth notes, and includes a fermata over measure 13. Measure numbers 13, 19, and 24 are indicated at the start of their respective staves.

29



35



41



46



52



57



63



68



73

**Grave**

5



9



Allegro

13

21

29

37

45

54

63

72

81

90

98

106

Allegro

f

5

9

13

16

20

24

28

32

36

40

tr

43



46



49



53



57



61



p *f* *p* *f* *p* *f*

Grave

9

17

25

p

Allegro

5

8

11

14

17

21

25

29

33

37

40

44

48

f

tr

p