
Tomaso
Albinoni

6 Sinfonie a cinque
op. 2

Violotta (Violino all'Ottava)

© 2007

CreativeCommons–Attribution–ShareAlike–3.0

Sonata I a 5

Tomaso Albinoni
op. 2 Nr. 1

Violotta

Grave e adagio

9
8

Allegro

9
16
23
30
37
44
51
58
8

Adagio

9 *p*

18

27

Allegro

10 *f*

17

24 *p* *f* *p*

30 *f* *p* *f*

37

44

50

56 *p*

Sonata II a 5

Violotta

Tomaso Albinoni
op. 2 Nr. 3

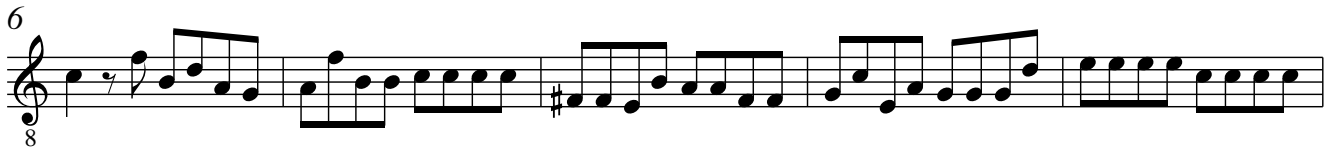
Largo

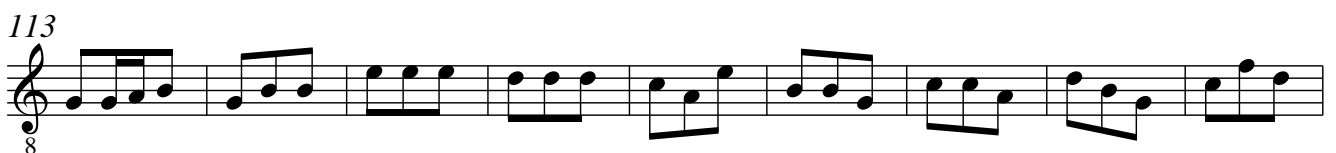
Musical score for the Largo section of Sonata II a 5 by Tomaso Albinoni. The score is written for Violotta in C major, common time (C), and 8/8 time signature. It consists of eight staves of music. The first staff begins with a forte (*f*) dynamic. The tempo is marked **Largo**. The score concludes with a piano (*p*) dynamic marking.

Allegro

Musical score for the Allegro section of Sonata II a 5 by Tomaso Albinoni. The score is written for Violotta in C major, common time (C), and 8/8 time signature. It begins with a triplet of eighth notes marked with a '3' above them. The tempo is marked **Allegro**. The score starts with a forte (*f*) dynamic.

Musical score for Violotta, page 5, measures 6-50. The score is written in treble clef with a key signature of one sharp (F#) and a time signature of 8/8. The music consists of ten staves of music, each starting with a measure number (6, 9, 13, 17, 21, 25, 29, 34, 38, 42, 46, 50) and a common 8 below the staff. The notation includes various rhythmic values such as eighth and sixteenth notes, rests, and accidentals (sharps and naturals).

Grave**Allegro**



Sonata III a 5

Tomaso Albinoni
op. 2 Nr. 5

Violotta

Grave

8 *f*

5

9 *p*

14

Allegro

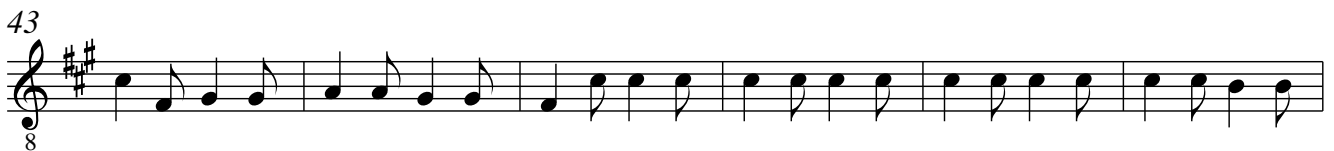
8 *f*

7

10

13

Musical score for Violotta, page 9, measures 16-52. The score is written in treble clef with a key signature of two sharps (F# and C#) and a common time signature (C). The music consists of ten staves of notation. The first staff (measures 16-19) begins with a measure rest and contains complex rhythmic patterns. The second staff (measures 20-23) continues with similar rhythmic complexity. The third staff (measures 24-27) features a more melodic line with some chromaticism. The fourth staff (measures 28-30) shows a steady eighth-note pattern. The fifth staff (measures 31-33) continues the eighth-note pattern. The sixth staff (measures 34-36) features a melodic line with some chromaticism. The seventh staff (measures 37-40) continues the melodic line. The eighth staff (measures 41-44) features a melodic line with some chromaticism. The ninth staff (measures 45-48) continues the melodic line. The tenth staff (measures 49-52) concludes the piece with a melodic line and a final measure rest. A dynamic marking of *p* (piano) is placed below the final staff.

Adagio**Allegro**



Violotta

Violotta
Sonata IV a 5

Tomaso Albinoni
op. 2 Nr. 7

Grave

7
8 *f*
13
8 *p*

Allegro

13 *f* *tr*
19
23
37
37
43
48
53
60
63

Adagio

Violotta

13

4
8
19
8
p

Allegro

21
30
39
49
59
70
80
90
100
110
121
f *tr*
p

Sonata V a 5

Tomaso Albinoni
op. 2 Nr. 9

Violotta

Largo

8 *f*

4

8

12

16

20

Allegro assai

4 *f*

9

14

20

Musical score for Violotta, measures 26-73. The score is written in treble clef with a key signature of one flat (B-flat) and a time signature of 8/8. The music consists of a single melodic line with various rhythmic patterns, including eighth and sixteenth notes, and rests. The measures are numbered 26, 32, 38, 44, 50, 56, 62, 67, and 73.

Grave

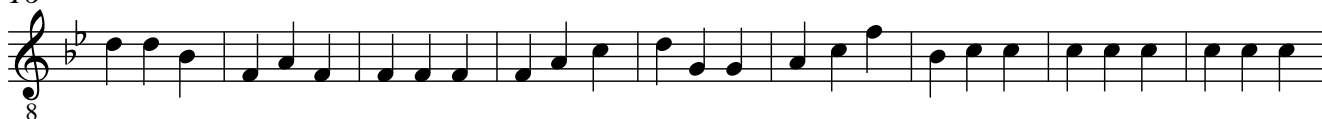
Musical score for Grave, measures 8-9. The score is written in treble clef with a key signature of one flat (B-flat) and a time signature of common time (C). The music is marked *p* (piano). The measures are numbered 8 and 9.

Allegro

9



16



25



34



43



51



59



68



77



86



95



104



Sonata VI a 5

Violotta

Tomaso Albinoni
op. 2 Nr. 11

Adagio

8 *f*

5

8

9

8

13

8 *p*

Allegro

8

15

f

18

tr

21

25

29

33

37

41

45

49

53

57

61

Grave

8

9

17

25

Allegro

8

11

14

17

21

25

29

34

37

40

43

46

50

f

tr

p