

---

Tomaso  
Albinoni

---

6 Sinfonie a cinque  
op. 2

---

Violino 2

---

© 2007

CreativeCommons–Attribution–ShareAlike–3.0

---

# Sonata I a 5

Tomaso Albinoni  
op. 2 Nr. 1

## Violino 2

**Grave e adagio**

Musical score for Violino 2, Grave e adagio section. The score is written in treble clef with a key signature of one sharp (F#) and a common time signature (C). The tempo is marked "Grave e adagio". The first line of music starts with a fermata on the first measure, followed by a series of quarter and eighth notes. A dynamic marking of *f* (forte) is placed below the first line. The second line of music continues the melodic line with various note values and rests.

**Allegro**

Musical score for Violino 2, Allegro section. The score is written in treble clef with a key signature of one sharp (F#) and a common time signature (C). The tempo is marked "Allegro". The first line of music starts with a dynamic marking of *f* (forte) and includes a trill (*tr*) over a note. The subsequent lines of music are marked with measure numbers 8, 15, 22, 29, 36, 43, 51, and 58. Trills (*tr*) are indicated above specific notes in measures 36 and 43. The music features a complex rhythmic pattern with many sixteenth and thirty-second notes.

## Adagio

Musical score for Violino 2, Adagio section. The score is written in treble clef with a key signature of one sharp (F#) and a 3/2 time signature. It consists of three staves of music. The first staff begins with a *p* dynamic marking. The second staff includes a *tr* (trill) marking. The third staff continues the melodic line.

## Allegro

Musical score for Violino 2, Allegro section. The score is written in treble clef with a key signature of one sharp (F#) and a 6/8 time signature. It consists of ten staves of music. The first staff begins with a *f* dynamic marking. The second staff includes a *tr* (trill) marking. The third staff includes a *p* dynamic marking. The fourth staff includes a *f* dynamic marking. The fifth staff includes a *p* dynamic marking. The sixth staff includes a *f* dynamic marking. The seventh staff includes a *p* dynamic marking. The eighth staff includes a *f* dynamic marking. The ninth staff includes a *tr* (trill) marking. The tenth staff includes a *p* dynamic marking.

# Sonata II a 5

Tomaso Albinoni  
op. 2 Nr. 3

## Violino 2

Largo

Musical score for Violino 2, Largo section. The score is written in treble clef with a common time signature (C). It begins with a whole rest followed by a half note G4, marked with a forte *f* dynamic. The piece features a series of eighth-note patterns, including a prominent sixteenth-note triplet starting at measure 4. Trills (*tr*) are used in measures 10 and 22. The section concludes with a piano *p* dynamic marking.

Allegro

Musical score for Violino 2, Allegro section. The score is written in treble clef with a common time signature (C). It begins with a whole rest followed by a half note G4, marked with a forte *f* dynamic. The piece features a series of eighth-note patterns, including a prominent sixteenth-note triplet starting at measure 4. Trills (*tr*) are used in measures 10 and 22. The section concludes with a piano *p* dynamic marking.

Musical score for Violino 2, page 5, measures 6-50. The score is written in treble clef with a key signature of one sharp (F#). The music consists of ten staves of music, each starting with a measure number. The notation includes various rhythmic values, accidentals, and trills (tr). The piece concludes with a double bar line at measure 50.

6

10 *tr*

14

18 *tr*

22

26

30 *tr*

34 *tr*

38

42

46 *tr*

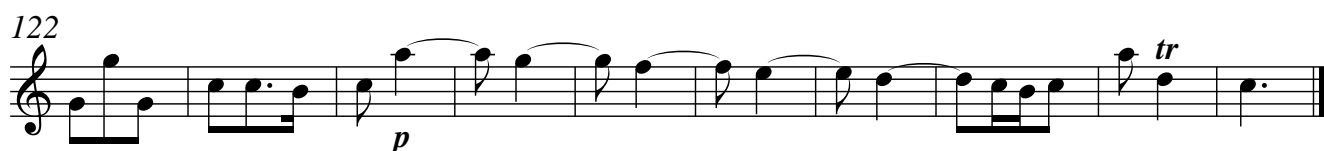
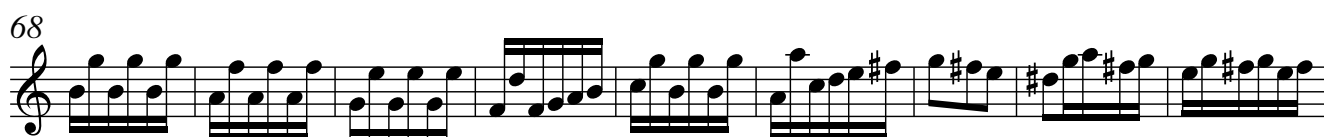
50 *tr*

**Grave**

Musical score for Violino 2, Grave section, measures 1-13. The score is written in treble clef with a common time signature (C). The tempo is marked **Grave**. The first measure (measure 1) starts with a piano (*p*) dynamic and features a series of eighth notes. A trill (*tr*) is indicated above the final note of the first measure. The score continues with various rhythmic patterns, including eighth and sixteenth notes, and rests. The key signature has one sharp (F#). The section ends at measure 13 with a double bar line.

**Allegro**

Musical score for Violino 2, Allegro section, measures 14-33. The score is written in treble clef with a 3/8 time signature. The tempo is marked **Allegro**. The first measure (measure 14) starts with a forte (*f*) dynamic and features a series of eighth notes. A sixteenth-note triplet (*6*) is indicated above the first three notes of the first measure. The score continues with various rhythmic patterns, including eighth and sixteenth notes, and rests. The key signature has one sharp (F#). The section ends at measure 33 with a double bar line.



# Sonata III a 5

Tomaso Albinoni  
op. 2 Nr. 5

## Violino 2

### Grave

Musical score for Violino 2, Grave section. The score is written in treble clef with a key signature of two sharps (F# and C#) and a common time signature (C). The tempo is marked "Grave". The score consists of five staves of music. The first staff begins with a dynamic marking of *f* (forte). The second staff is marked with the number 4. The third staff is marked with the number 8. The fourth staff is marked with the number 11 and a dynamic marking of *p* (piano). The fifth staff is marked with the number 15. The music features a mix of quarter, eighth, and sixteenth notes, with some rests and slurs.

### Allegro

Musical score for Violino 2, Allegro section. The score is written in treble clef with a key signature of two sharps (F# and C#) and a common time signature (C). The tempo is marked "Allegro". The score consists of three staves of music. The first staff begins with a dynamic marking of *f* (forte). The second staff is marked with the number 6. The third staff is marked with the number 10. The fourth staff is marked with the number 13. The music features a mix of quarter, eighth, and sixteenth notes, with some rests and slurs.



Musical score for Violino 2, page 9, measures 16-52. The score is written in treble clef with a key signature of two sharps (F# and C#). The music consists of ten staves of notation, each starting with a measure number. The notation includes various rhythmic values, accidentals, and dynamic markings. A *p* (piano) dynamic marking is present at the end of the piece.

16

20

24

28

31

34

37

41

45

48

52

*p*

**Adagio**

Musical score for Violino 2, Adagio section. The score is written in treble clef with a key signature of three sharps (F#, C#, G#) and a 3/4 time signature. It consists of four staves of music. The first staff begins with a piano (*p*) dynamic marking and a trill (*tr*) on the final note. The tempo is marked Adagio.

**Allegro**

Musical score for Violino 2, Allegro section. The score is written in treble clef with a key signature of three sharps (F#, C#, G#) and a 6/8 time signature. It consists of six staves of music. The first staff begins with a forte (*f*) dynamic marking and a trill (*tr*) on the final note. The tempo is marked Allegro.

37 *tr*

43

49

55

61

67

72 *tr*

77

82

87

93 *p*

Detailed description: This image shows a page of musical notation for Violino 2, page 11. The score is written in treble clef with a key signature of two sharps (F# and C#). The music consists of ten staves of notation, each starting with a measure number. The notation includes various rhythmic values, accidentals, and dynamic markings. A trill (tr) is indicated above the first staff and above the first measure of the seventh staff. A piano (p) dynamic marking is placed below the final measure of the tenth staff. The music features a mix of eighth and sixteenth notes, often beamed together, and some rests.

# Sonata IV a 5

## Violino 2

Tomaso Albinoni  
op. 2 Nr. 7

### Grave

Musical score for Violino 2, Grave section, measures 1-16. The score is written in treble clef, C major, common time (C). The tempo is marked 'Grave'. The dynamics range from *f* (forte) to *p* (piano). The key signature is one flat (B-flat).

Measures 1-16:

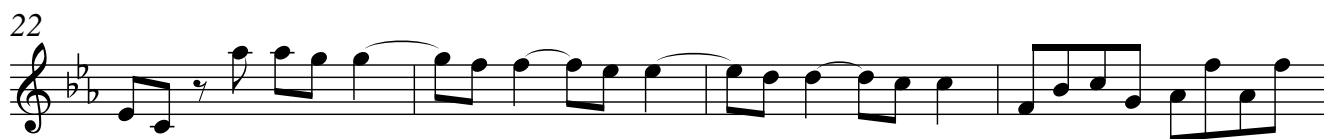
- Measure 1: *f* (forte)
- Measure 4: *f* (forte)
- Measure 8: *f* (forte)
- Measure 12: *f* (forte)
- Measure 16: *p* (piano)

### Allegro

Musical score for Violino 2, Allegro section, measures 17-16. The score is written in treble clef, C major, common time (C). The tempo is marked 'Allegro'. The dynamics range from *f* (forte) to *tr* (trill). The key signature is one flat (B-flat).

Measures 17-16:

- Measure 17: *f* (forte)
- Measure 18: *f* (forte)
- Measure 19: *f* (forte)
- Measure 20: *f* (forte)
- Measure 21: *f* (forte)
- Measure 22: *f* (forte)
- Measure 23: *f* (forte)
- Measure 24: *f* (forte)
- Measure 25: *f* (forte)
- Measure 26: *f* (forte)
- Measure 27: *f* (forte)
- Measure 28: *f* (forte)
- Measure 29: *f* (forte)
- Measure 30: *f* (forte)
- Measure 31: *f* (forte)
- Measure 32: *f* (forte)
- Measure 33: *f* (forte)
- Measure 34: *f* (forte)
- Measure 35: *f* (forte)
- Measure 36: *f* (forte)
- Measure 37: *f* (forte)
- Measure 38: *f* (forte)
- Measure 39: *f* (forte)
- Measure 40: *f* (forte)
- Measure 41: *f* (forte)
- Measure 42: *f* (forte)
- Measure 43: *f* (forte)
- Measure 44: *f* (forte)
- Measure 45: *f* (forte)
- Measure 46: *f* (forte)
- Measure 47: *f* (forte)
- Measure 48: *f* (forte)
- Measure 49: *f* (forte)
- Measure 50: *f* (forte)
- Measure 51: *f* (forte)
- Measure 52: *f* (forte)
- Measure 53: *f* (forte)
- Measure 54: *f* (forte)
- Measure 55: *f* (forte)
- Measure 56: *f* (forte)
- Measure 57: *f* (forte)
- Measure 58: *f* (forte)
- Measure 59: *f* (forte)
- Measure 60: *f* (forte)
- Measure 61: *f* (forte)
- Measure 62: *f* (forte)
- Measure 63: *f* (forte)
- Measure 64: *f* (forte)
- Measure 65: *f* (forte)
- Measure 66: *f* (forte)
- Measure 67: *f* (forte)
- Measure 68: *f* (forte)
- Measure 69: *f* (forte)
- Measure 70: *f* (forte)
- Measure 71: *f* (forte)
- Measure 72: *f* (forte)
- Measure 73: *f* (forte)
- Measure 74: *f* (forte)
- Measure 75: *f* (forte)
- Measure 76: *f* (forte)
- Measure 77: *f* (forte)
- Measure 78: *f* (forte)
- Measure 79: *f* (forte)
- Measure 80: *f* (forte)
- Measure 81: *f* (forte)
- Measure 82: *f* (forte)
- Measure 83: *f* (forte)
- Measure 84: *f* (forte)
- Measure 85: *f* (forte)
- Measure 86: *f* (forte)
- Measure 87: *f* (forte)
- Measure 88: *f* (forte)
- Measure 89: *f* (forte)
- Measure 90: *f* (forte)
- Measure 91: *f* (forte)
- Measure 92: *f* (forte)
- Measure 93: *f* (forte)
- Measure 94: *f* (forte)
- Measure 95: *f* (forte)
- Measure 96: *f* (forte)
- Measure 97: *f* (forte)
- Measure 98: *f* (forte)
- Measure 99: *f* (forte)
- Measure 100: *f* (forte)



**Adagio**

Musical score for Violino 2, Adagio section, measures 1-11. The score is written in treble clef, key signature of two flats (B-flat and E-flat), and common time (C). Measure 1 starts with a fermata and a dynamic marking of *p*. Measure 2 has a fingering of 2. Measures 3-11 continue with various rhythmic patterns, including eighth and sixteenth notes, and a trill in measure 11.

**Allegro**

Musical score for Violino 2, Allegro section, measures 12-39. The score is written in treble clef, key signature of two flats (B-flat and E-flat), and 3/8 time. Measure 12 starts with a fermata and a dynamic marking of *f*. Measure 13 has a fingering of 7. Measure 14 has a trill marking (*tr*). Measures 15-39 continue with various rhythmic patterns, including eighth and sixteenth notes, and a trill in measure 14.



# Sonata V a 5

Tomaso Albinoni  
op. 2 Nr. 9

## Violino 2

**Largo**

Musical score for Violino 2, Largo movement. The score is written in G minor (one flat) and common time (C). It consists of six staves of music. The first staff begins with a forte (*f*) dynamic. The second staff starts at measure 4. The third staff starts at measure 8 and includes a trill (*tr*) above the first measure. The fourth staff starts at measure 12. The fifth staff starts at measure 16 and includes a trill (*tr*) above the final measure. The sixth staff starts at measure 20. The music features a mix of eighth and sixteenth notes, with some rests and trills.

**Allegro assai**

Musical score for Violino 2, Allegro assai movement. The score is written in G minor (one flat) and common time (C). It consists of four staves of music. The first staff begins with a forte (*f*) dynamic and includes a triplet of eighth notes marked with a '3' above them. The second staff starts at measure 8 and includes a trill (*tr*) above the final measure. The third staff starts at measure 14. The fourth staff starts at measure 20. The music is characterized by rapid sixteenth-note passages and some longer note values.



Musical score for Violino 2, measures 26-73. The score is written in G minor (one flat) and 4/4 time. It consists of eight staves of music. Measure numbers 26, 32, 38, 44, 50, 55, 61, 67, and 73 are indicated at the beginning of their respective staves. Trills (tr) are marked above notes in measures 44, 61, and 67. The music features a variety of rhythmic patterns, including eighth and sixteenth notes, and rests.

**Grave**

Musical score for Violino 2, measures 1-9, marked **Grave**. The score is written in G minor (one flat) and common time (C). It consists of three staves of music. Measure numbers 1, 5, and 9 are indicated at the beginning of their respective staves. A piano (*p*) dynamic marking is present in measure 1. The music is characterized by a slow tempo and features a variety of rhythmic patterns, including eighth and sixteenth notes, and rests.

**Allegro**

7

*f*

*tr*

13

21

*tr*

29

*tr*

38

*p.* *p.* *p.* *p.* *p.* *p.* *tr*

48

57

65

73

83

95

106

# Sonata VI a 5

Violino 2

Tomaso Albinoni  
op. 2 Nr. 11**Adagio**

**Allegro**

4

*f*

7

10

13

17

21

25

28

32

36

40

*tr*

The image shows a page of musical notation for Violino 2, starting with a 4-measure rest and a forte dynamic. The score is in G minor (one flat) and common time (C). It consists of ten staves of music, with measure numbers 4, 7, 10, 13, 17, 21, 25, 28, 32, 36, and 40 marked at the beginning of their respective staves. The music features a variety of rhythmic patterns, including eighth and sixteenth notes, and includes trills (tr) in measures 10, 36, and 40.

Musical score for Violino 2, measures 44-61. The score is written in treble clef with a key signature of one flat (B-flat). The tempo is marked *Allegretto*. The music features a series of sixteenth-note patterns and slurs. Dynamic markings include *p* (piano) and *f* (forte).

Measures 44-47: Introduction of a sixteenth-note pattern with a slur and a B-flat. Measure 47 has a *p* marking.

Measures 48-50: Continuation of the sixteenth-note pattern with a slur and a B-flat. Measure 50 has a *p* marking.

Measures 51-53: Continuation of the sixteenth-note pattern with a slur and a B-flat. Measure 51 has a *f* marking, measure 52 has a *p* marking, and measure 53 has a *f* marking.

Measures 54-56: Continuation of the sixteenth-note pattern with a slur and a B-flat. Measure 54 has a *p* marking, and measure 55 has a *f* marking.

Measures 57-60: A series of quarter notes with a slur. Measure 60 has a *f* marking.

Measure 61: A final measure with a half note and a slur.

**Grave**

Musical score for Violino 2, measures 1-26, marked **Grave**. The score is written in treble clef with a key signature of one flat (B-flat) and a 3/4 time signature. The music is characterized by slow, sustained notes and trills.

Measures 1-7: Slow, sustained notes with a *p* marking. Measure 7 has a *p* marking.

Measures 8-13: A series of notes with a slur and a trill (*tr*) in measure 8. Measure 13 has a *tr* marking.

Measures 14-20: A series of notes with a slur and a trill (*tr*) in measure 14. Measure 20 has a *tr* marking.

Measures 21-25: A series of notes with a slur and a trill (*tr*) in measure 21. Measure 25 has a *tr* marking.

Measure 26: A final measure with a half note and a slur.

**Allegro**

Musical score for Violino 2, Allegro, measures 1-50. The score is written in G minor (one flat) and 12/8 time. It features a variety of rhythmic patterns, including eighth and sixteenth notes, and rests. Dynamics include *f* (forte) at measure 1 and *p* (piano) at measure 46. Trills (*tr*) are marked at measures 1, 25, and 49. The score is divided into systems of five staves each, with measure numbers 5, 9, 13, 17, 21, 25, 30, 34, 38, 42, 46, and 50 indicated at the beginning of each system.